



## OPERATION MANUAL

# SPARE PARTS SECTION

The following section covers the spare parts diagrams and lists that were current at the time this manual was originally printed. Due to continuous improvements of the machine, changes may be made at any time without notification.

### HOW TO ORDER SPARE PARTS

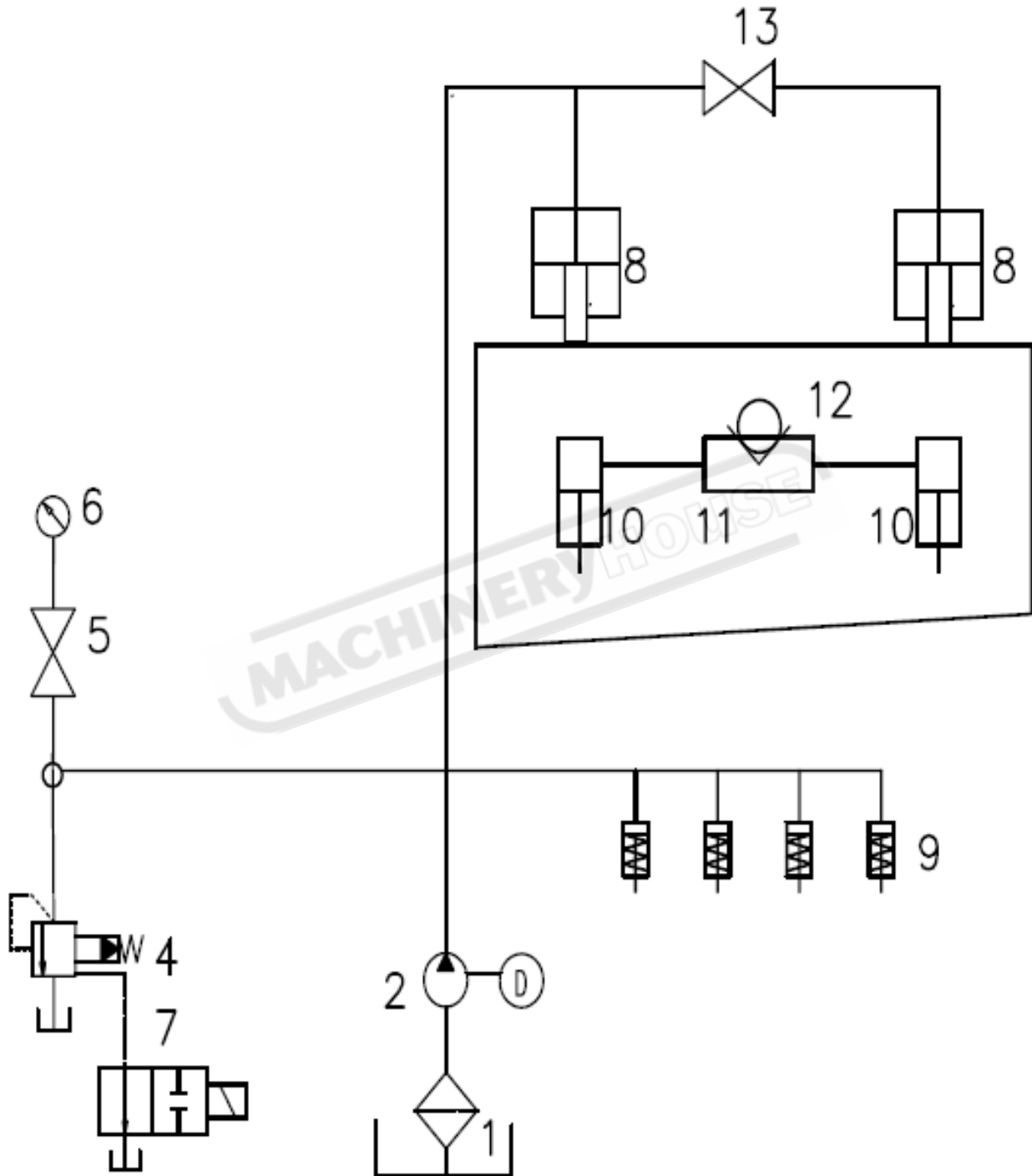
1. Have your machines **model number, serial number & date of manufacture** on hand, these can be found on the specification plate mounted on the machine
2. A scanned copy of your parts list/diagram with required spare part/s identified
3. Go to [www.machineryhouse.com.au/contactus](http://www.machineryhouse.com.au/contactus) and fill out the inquiry form attaching a copy of scanned parts list.





OPERATION MANUAL

A. HYDRAULIC CIRCUIT FOR SG-2504E





## OPERATION MANUAL

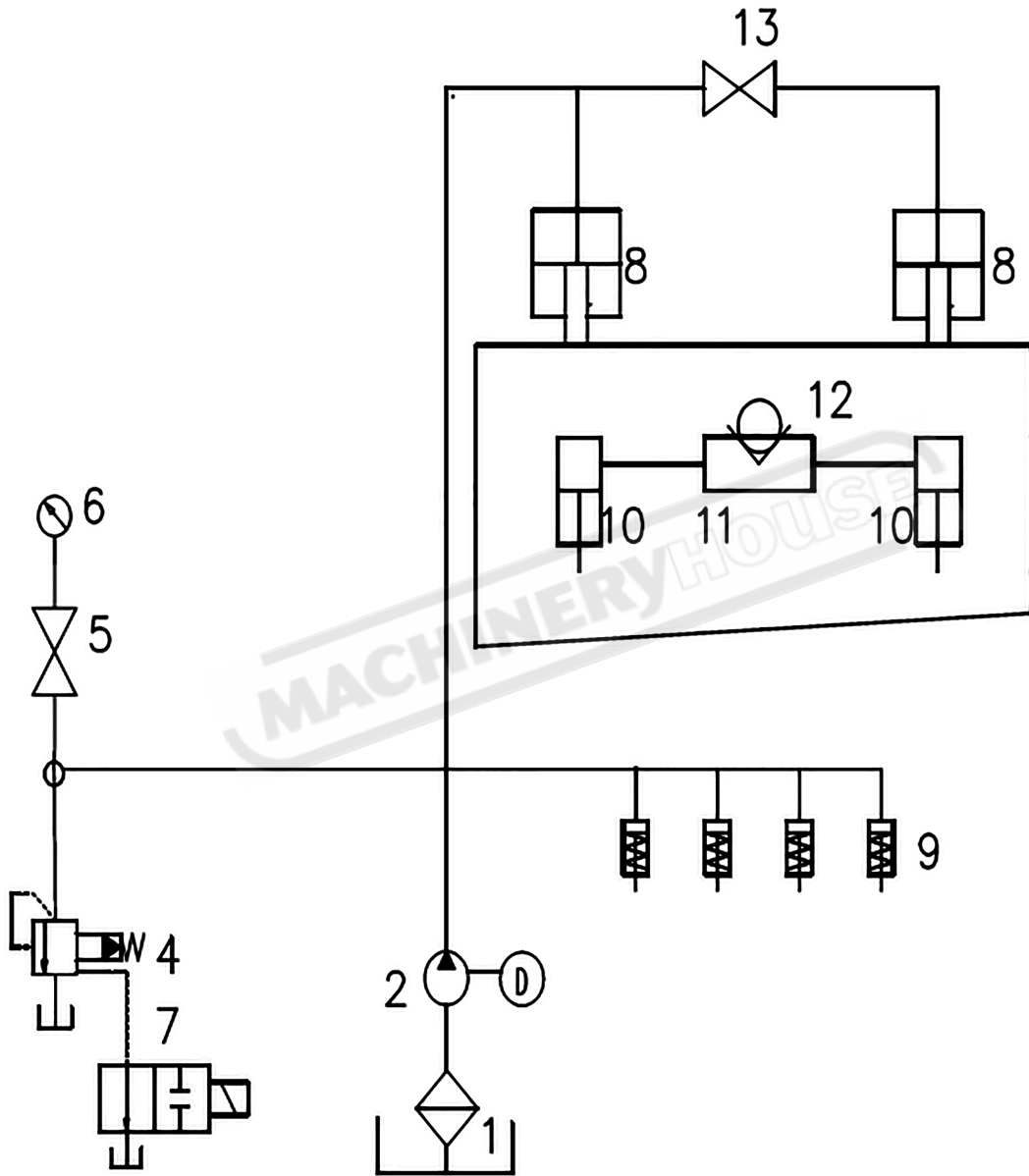
### A. HYDRAULIC PARTS LIST FOR SG-2504E

No.	Name	Model	Qty.	Remarks
1	Oil Filter	WU-63*100-J	1	
2	Gear Pump	CPO-10-P-10R	1	
3				
4	Overflow Valve		1	
5	Pressure Meter Switch	KJF-L8H	1	
6	Pressure Meter	YN60-40	1	40MPa
7	Electromagnetic Exchange Valve	4WE6D61/EGZ4NZ5L	1	
8	Oil cylinder	4 x 2500	2	
9	Material Clamp Cylinder		10	
10	Return Oil Cylinder		2	
11	Accumulator	NXQ A-2.5	1	<6Mpa
12	Fill air valve	QXF-5	1	
13	Ball valve	CJXQ-F10L	1	



OPERATION MANUAL

A. HYDRAULIC CIRCUIT FOR SG-2506E & SG-3206E





## OPERATION MANUAL

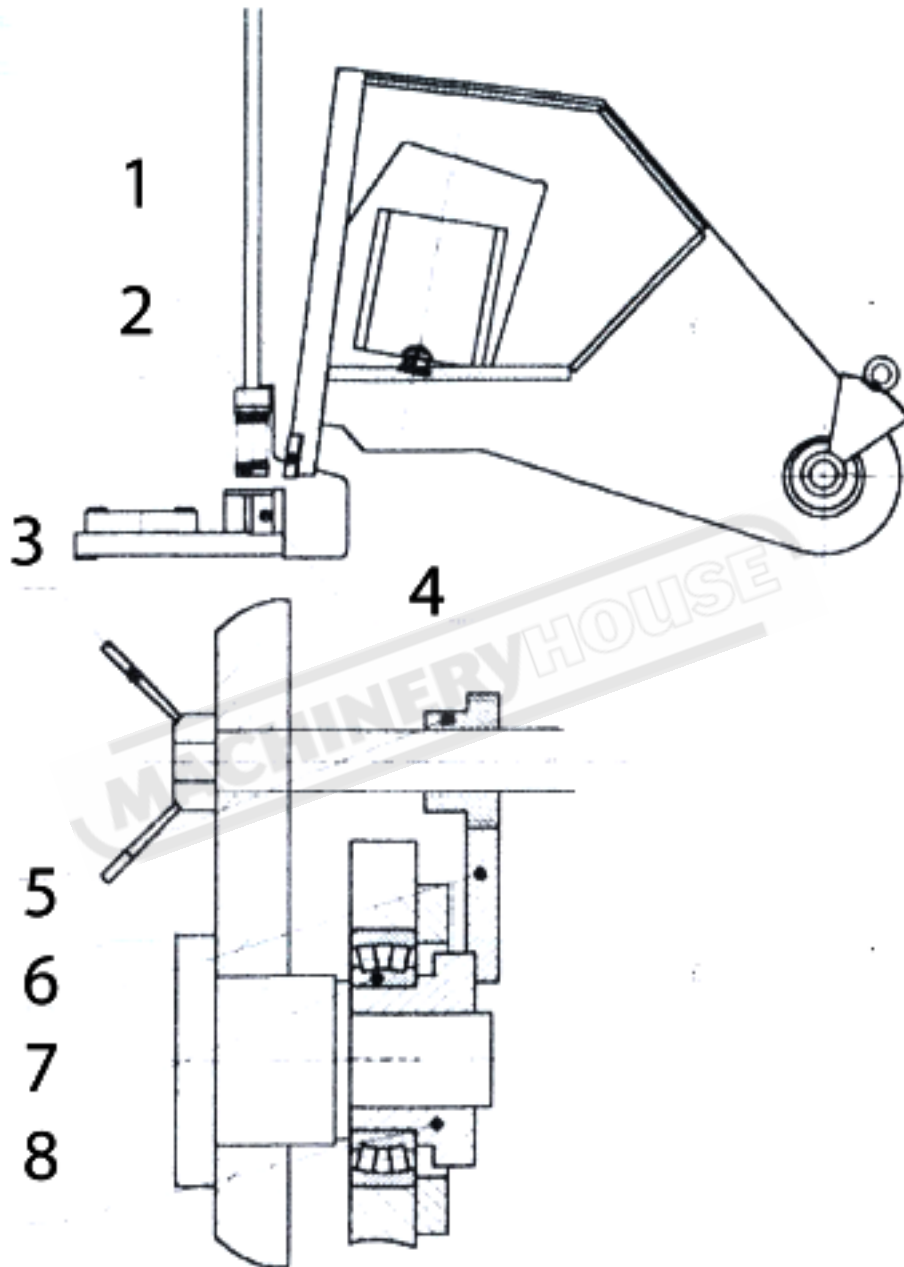
### A. HYDRAULIC PARTS LIST FOR SG-2506E & SG-3206E

No.	Name	Model	Qty.	Remarks
1	Oil Filter	WU-63*100-J	1	
2	Gear Pump	CPO-25-P-10R	1	
3				
4	Overflow Valve		1	
5	Pressure Meter Switch	KJF-L8H	1	
6	Pressure Meter	YN60-40	1	40MPa
7	Electromagnetic Exchange Valve	4WE6D61/EGZ4NZ5L	1	
8	Oil cylinder	6 x 3200	2	
9	Material Clamp Cylinder		14	
10	Return Oil Cylinder		2	
11	Accumulator	NXQ A-4	1	<6Mpa
12	Globe Valve	XJF-10	1	
13	Ball valve	CJXQ-F10L	1	



# OPERATION MANUAL

## B. MATERIAL CLAMPS & BLADE GAP ADJUSTMENT

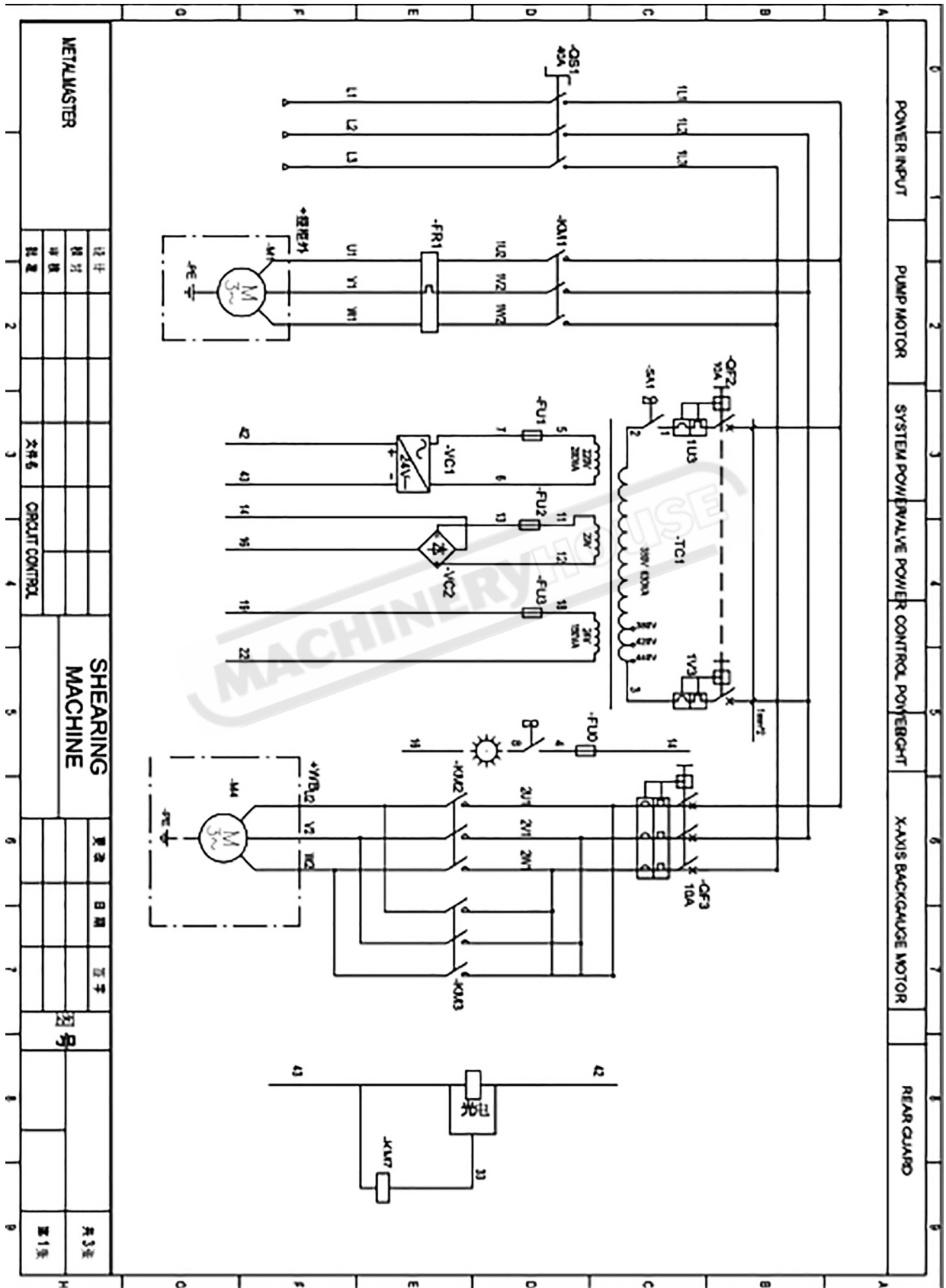


- |                           |                      |                       |
|---------------------------|----------------------|-----------------------|
| 1 - Upper Blade           | 2 - Material Clamps  | 3 - Adjustment Handle |
| 4 - Blade Movement Holder | 5 - Support Cover    | 6 - Fan Shape Gear    |
| 7 - Bearing               | 8 - Adjust Bush Gear |                       |



OPERATION MANUAL

C. ELECTRIC CIRCUIT DIAGRAM



METALMASTER

设计  
校对  
审核  
批准

文件号  
CIRCUIT CONTROL

SHEARING MACHINE

更改  
日期  
签字

图号

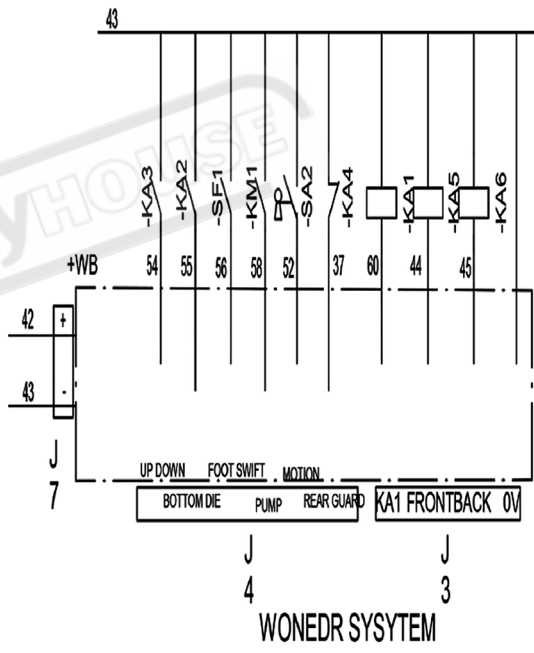
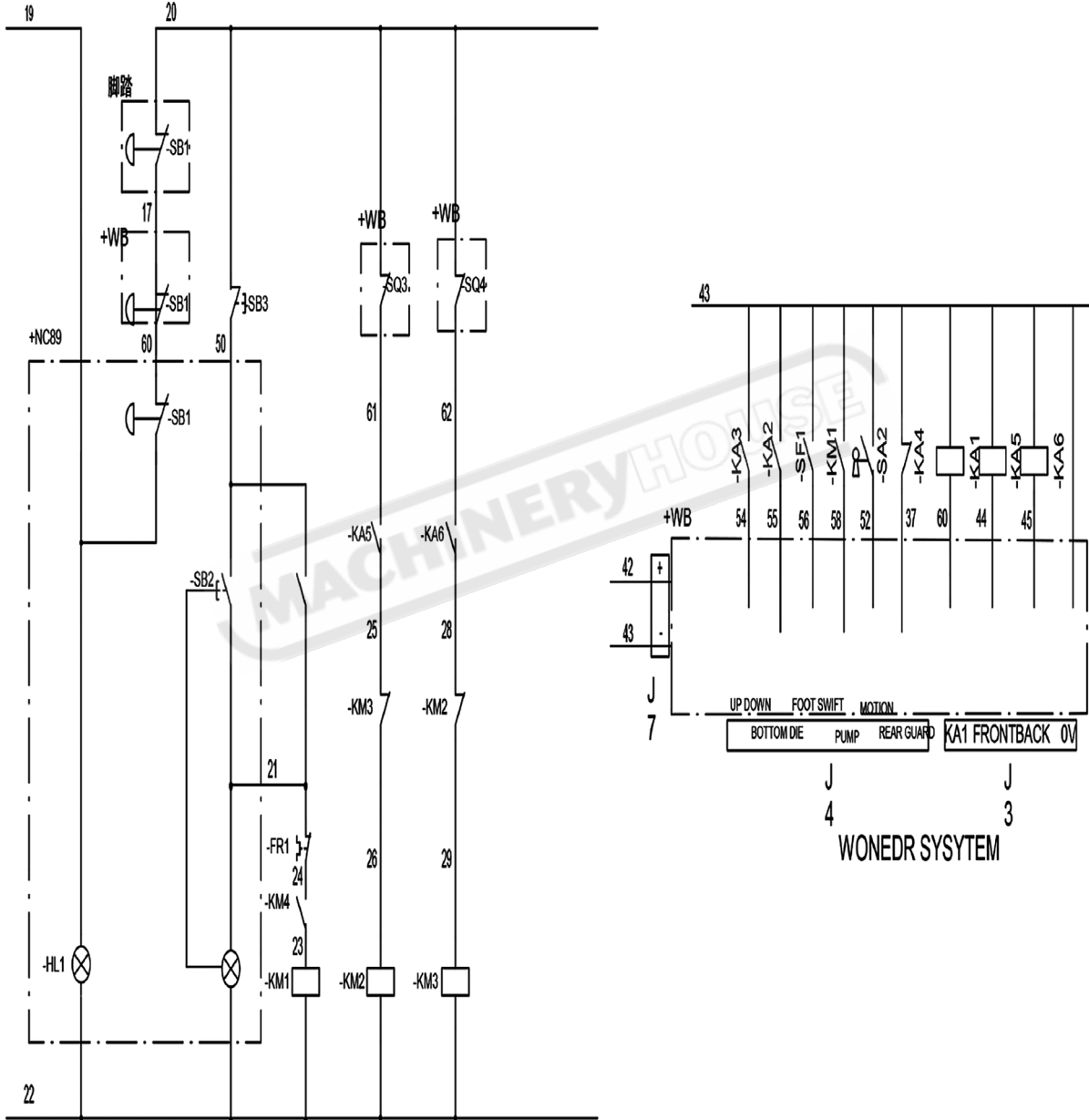
共3张  
第1张



# OPERATION MANUAL

## C. ELECTRIC CIRCUIT DIAGRAM

0	1	2	3	4	5	6	7	8	9
POWER LIGHT	E-STOP	MAIN MOTOR CONTROL	X-AXIS CONTROL			WONEDR NC89 SYSTEM			







# OPERATION MANUAL

## C. ELECTRIC CIRCUIT DIAGRAM

0	1	2	3	4	5	6	7
	BOTTOM DIE POINT		RESET REAR GUARD	UP DIE POINT		VALVE CONTROL	

